

SPLIT TYPE  
ROOM AIR CONDITIONER  
FLOOR TYPE

# SERVICE MANUAL



Indoor unit	Outdoor unit
AGYG09LVCA	AOYG09LVCA
AGYG12LVCA	AOYG12LVCA

## CONTENTS

SPECIFICATIONS.....	1
DIMENSIONS.....	2
REFRIGERANT SYSTEM DIAGRAM....	3
CIRCUIT DIAGRAM.....	4
INDOOR PCB CIRCUIT DIAGRAM....	5
OUTDOOR PCB CIRCUIT DIAGRAM....	8
ERROR DETECTION.....	10
PARTS (INDOOR UNIT).....	11
PARTS (OUTDOOR UNIT).....	16
ACCESSORIES.....	18

# SPECIFICATIONS

## ELECTRICAL DATA

TYPE		Cool & heat inverter	
INDOOR UNIT		AGYG09LVCA	AGYG12LVCA
OUTDOOR UNIT		AOYG12LVCA	AOYG12LVCA
COOLING CAPACITY		2.60 kW	3.50 kW
HEATING CAPACITY		3.50 kW	4.50 kW
POWER SOURCE		230 V	230 V
FREQUENCY		50 Hz	50 Hz
RUNNING CURRENT	Cooling	2.7 A	4.4 A
	Heating	3.9 A	5.6 A
INPUT WATTS	Cooling	0.53 kW	0.91 kW
	Heating	0.79 kW	1.19 kW
E.E.R.	Cooling	4.91 kW/kW	3.85 kW/kW
COP	Heating	4.43 kW/kW	3.78 kW/kW
MOISTURE REMOVAL		1.3 L/hr	1.8 L/h
AIR CIRCULATION HIGH	Cooling	570 m3/hr	570 m3/hr
	Heating	600 m3/hr	600 m3/hr
MAXIMUM CURRENT	Cooling	9.0 A	9.0 A
	Heating	11.5 A	11.5 A

## FAN MOTOR

POWER SOURCE		230 V	
INDOOR UNIT cooling (upper fan / lower fan)	High	1,190 r.p.m. / 1,000 r.p.m.	
	Medium	1,000 r.p.m. / 850 r.p.m.	
	Low	820 r.p.m. / 690 r.p.m.	
	Quiet	660 r.p.m. / 560 r.p.m.	
INDOOR UNIT heating (upper fan / lower fan)	High	1,240 r.p.m. / 1,040 r.p.m.	
	Medium	1,040 r.p.m. / 880 r.p.m.	
	Low	840 r.p.m. / 700 r.p.m.	
	Quiet	660 r.p.m. / 560 r.p.m.	
OUTDOOR UNIT Cooling		870 r.p.m.	
OUTDOOR UNIT Heating		780 r.p.m.	

## NOISE LEVEL

INDOOR UNIT Cooling	High	40 dB	
	Medium	35 dB	
	Low	29 dB	
	Quiet	22 dB	
INDOOR UNIT Heating	High	40 dB	
	Medium	35 dB	
	Low	29 dB	
	Quiet	22 dB	
OUTDOOR UNIT Cooling		47 dB	48 dB
OUTDOOR UNIT Heating		49 dB	50 dB

## COMPRESSOR AND REFRIGERANT

COMPRESSOR TYPE		Hermetic type, 4 pole, 3 phase, Rotary, DC inverter motor	
DISCRIMINATION		DA89X1C-20FZ	DA89X1C-20FZ2
WEIGHT (with oil)		9.8 kg	9.2 kg
PRECHARGED REFRIGERANT		1,050 g	
REFRIGERANT TYPE		R410A	
FULL CHARGE	Pipe length 15 m	1,050 g	
	20 m	1,150 g	
ADDITIONAL CHARGE		20 g/m	
MAXIMUM PIPING HEIGHT		15m	

## DIMENSIONS

INDOOR UNIT	H x W x D	600 x 740 x 200 mm
OUTDOOR UNIT	H x W x D	540 x 790 x 290 mm

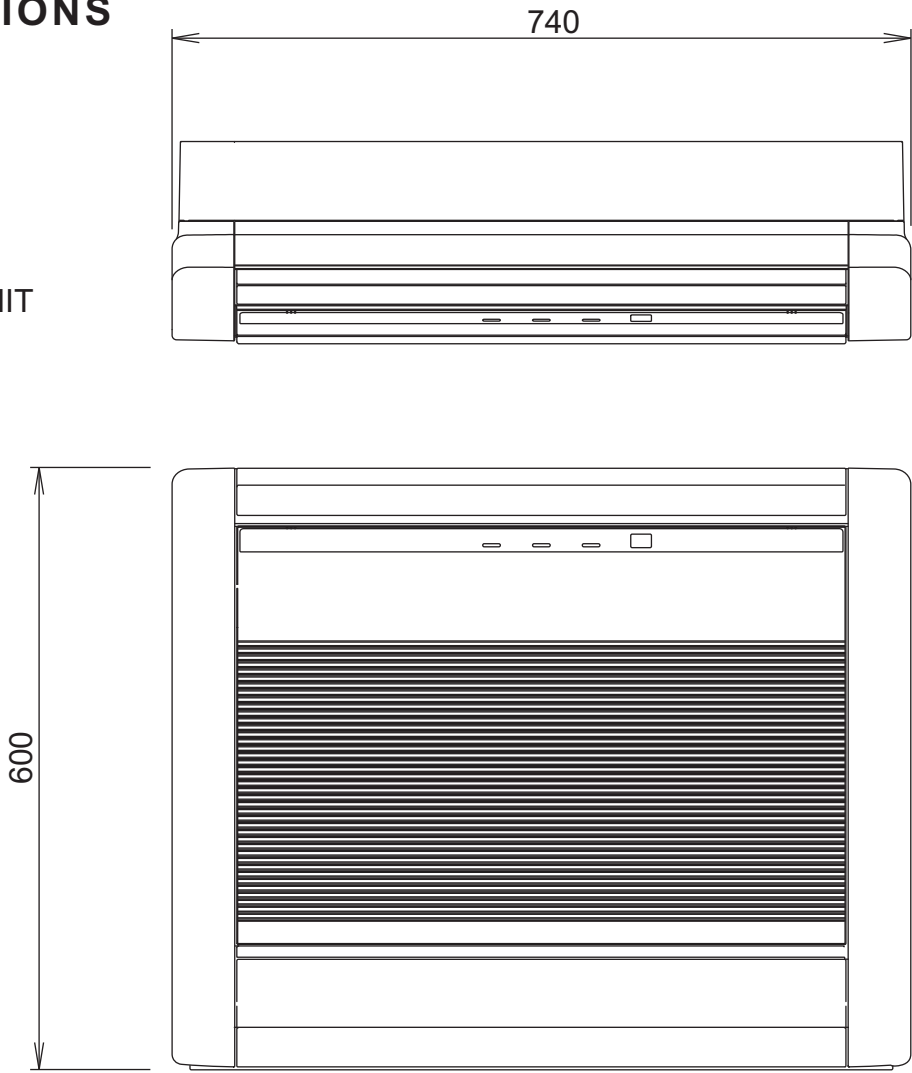
## WEIGHT

INDOOR UNIT	Net / Shipping	14 kg / 17 kg
OUTDOOR UNIT	Net / Shipping	40 kg / 36 kg

DIMENSIONS

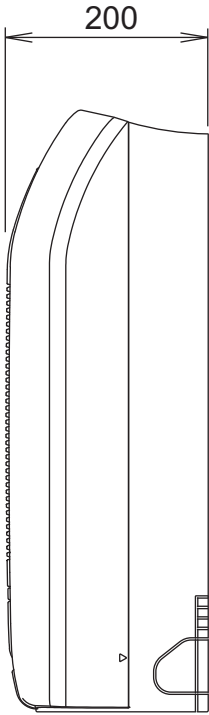
unit : mm

INDOOR UNIT

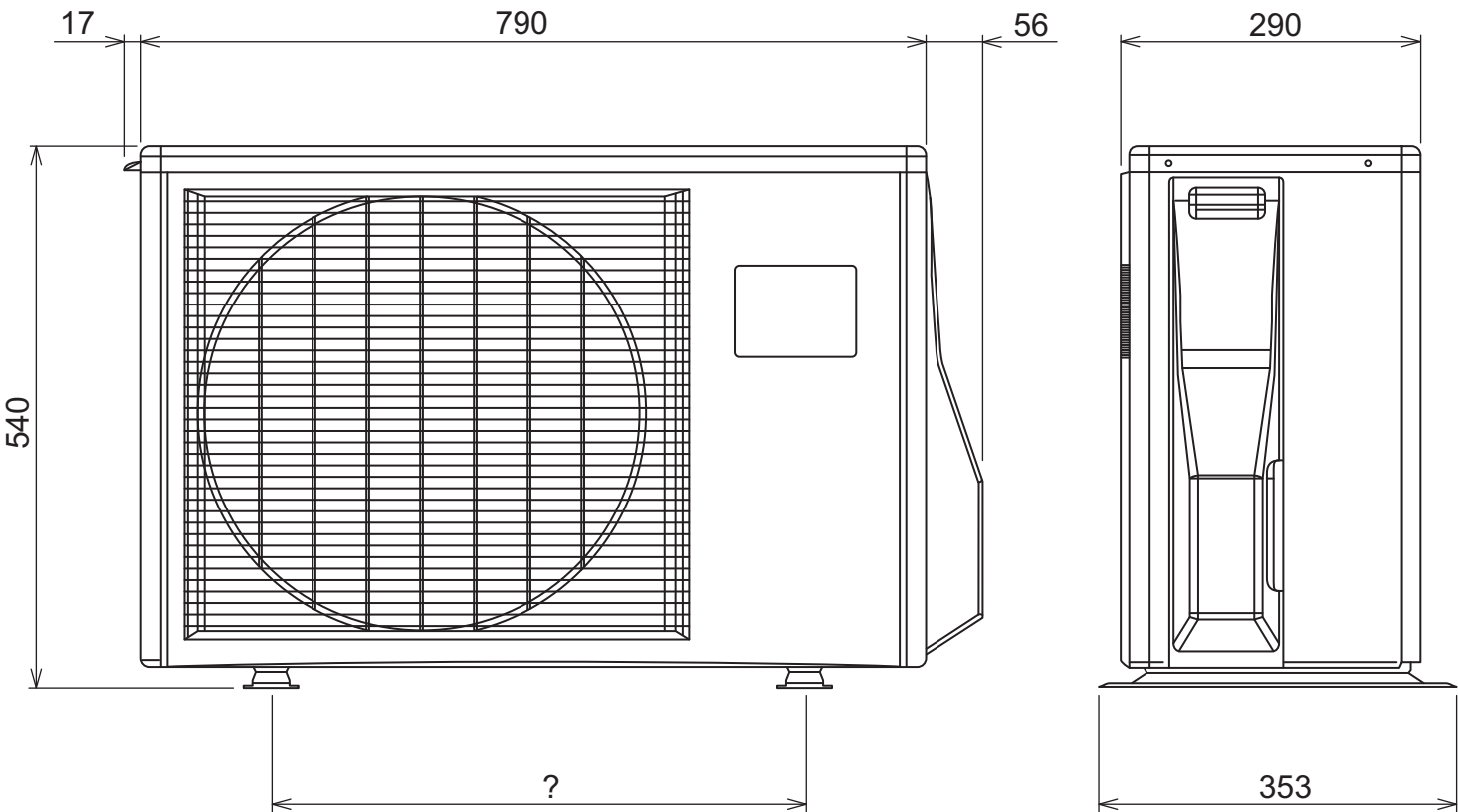


Drain hose length :  
600 mm

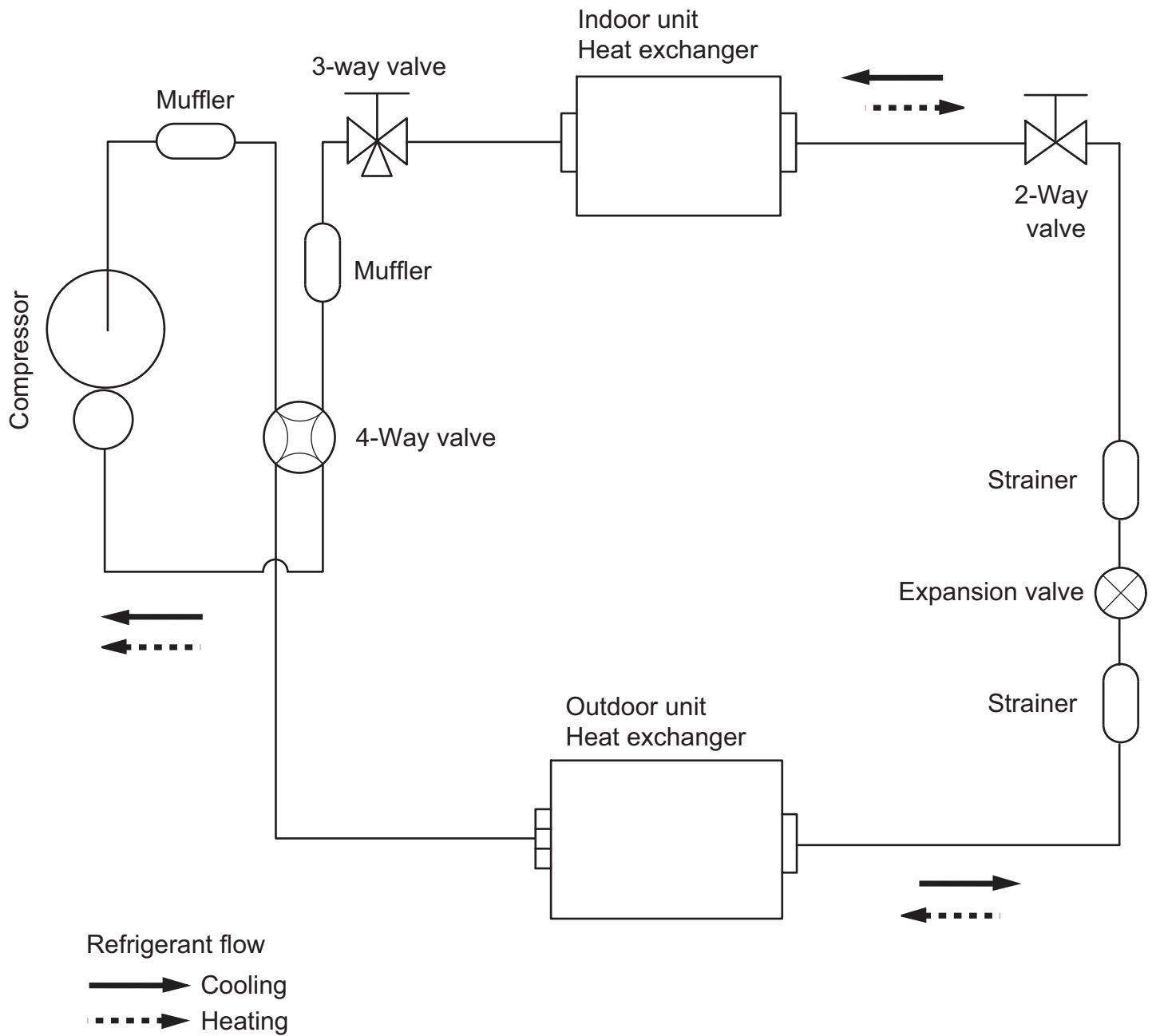
Drain pipe diameter  
Inside : 14.2 mm  
Outside : 16.2 mm



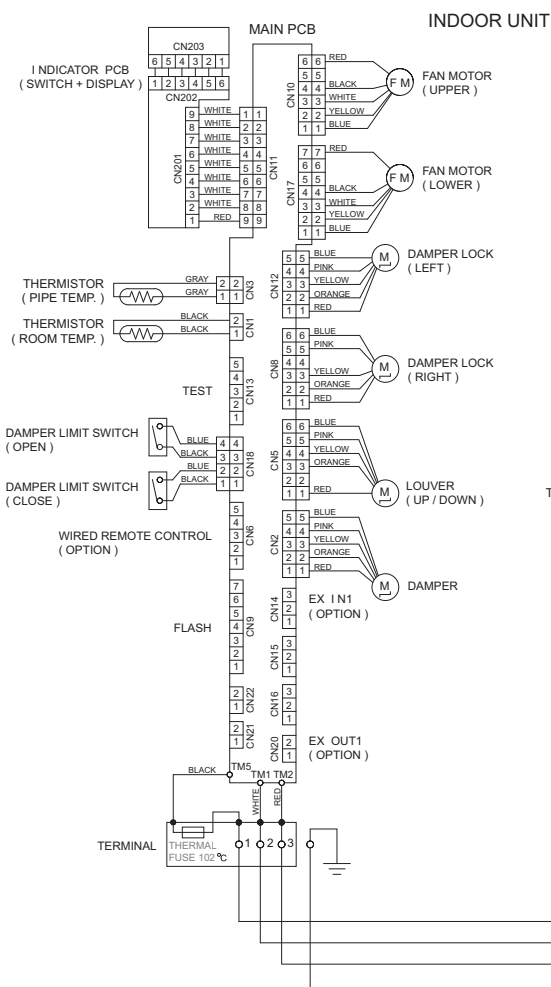
OUTDOOR UNIT



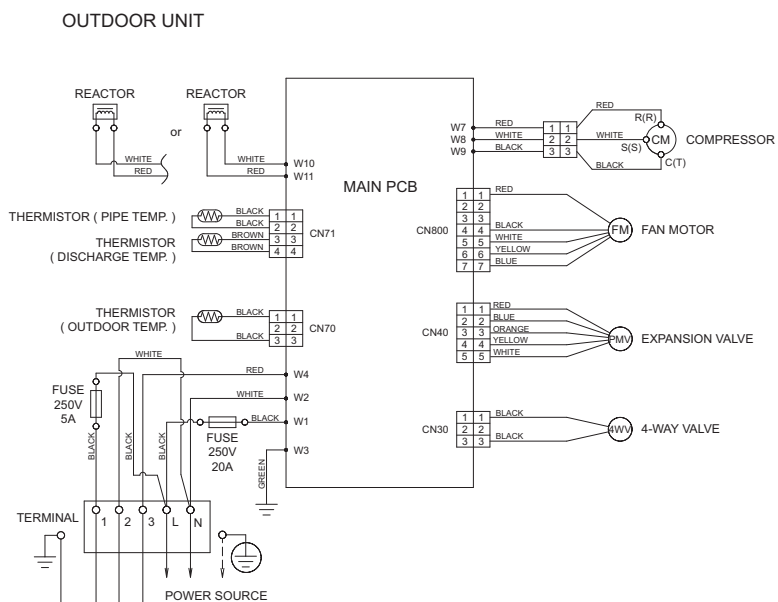
# REFRIGERANT SYSTEM DIAGRAM



Refrigerant pipe diameter  
 Liquid : 1/4" (6.35 mm)  
 Gas : 3/8" (9.52 mm)



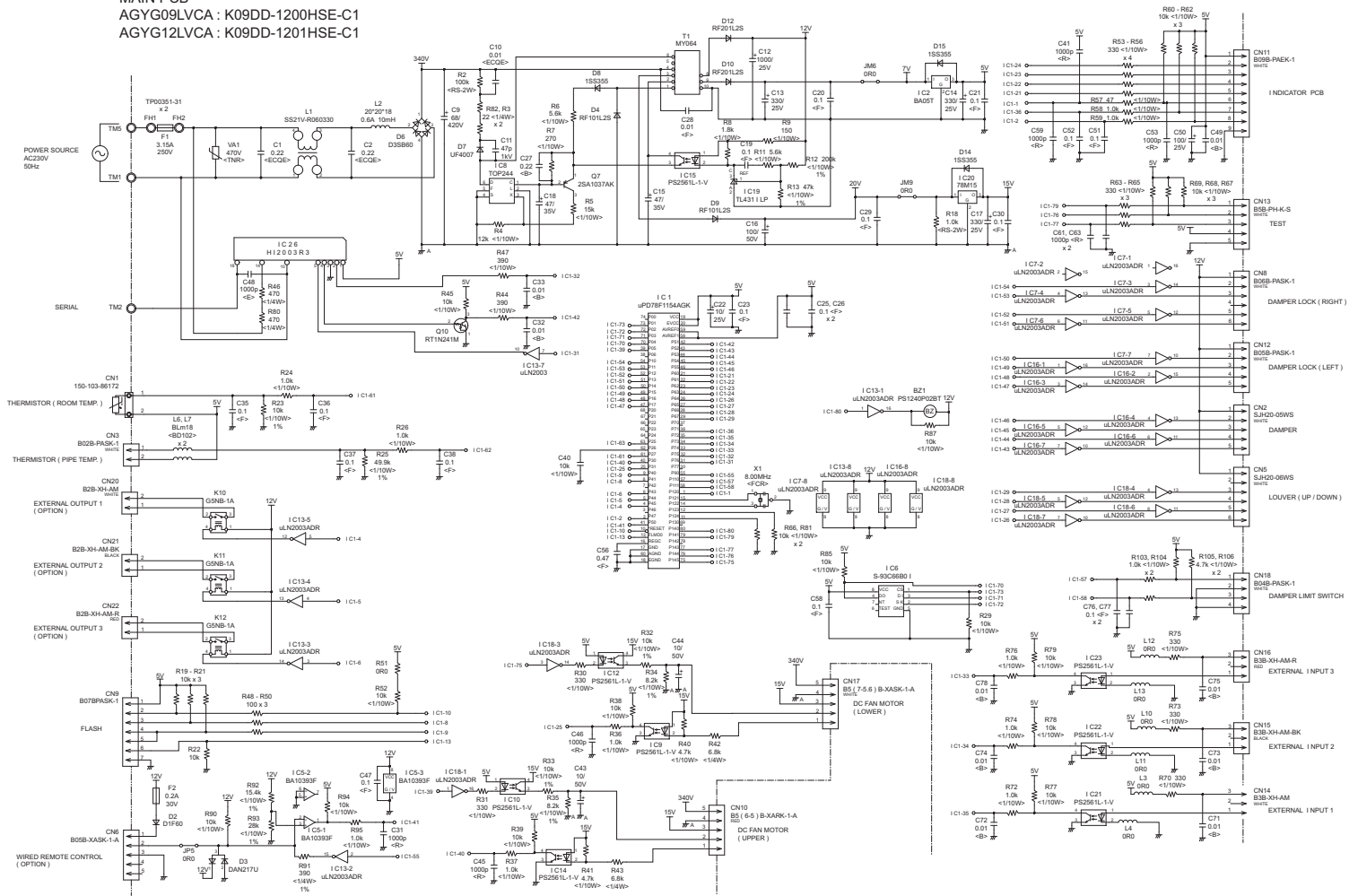
## CIRCUIT DIAGRAM



CONTROL UNIT  
AGYG09LVCA : EZ-01216HSE  
AGYG12LVCA : EZ-01217HSE

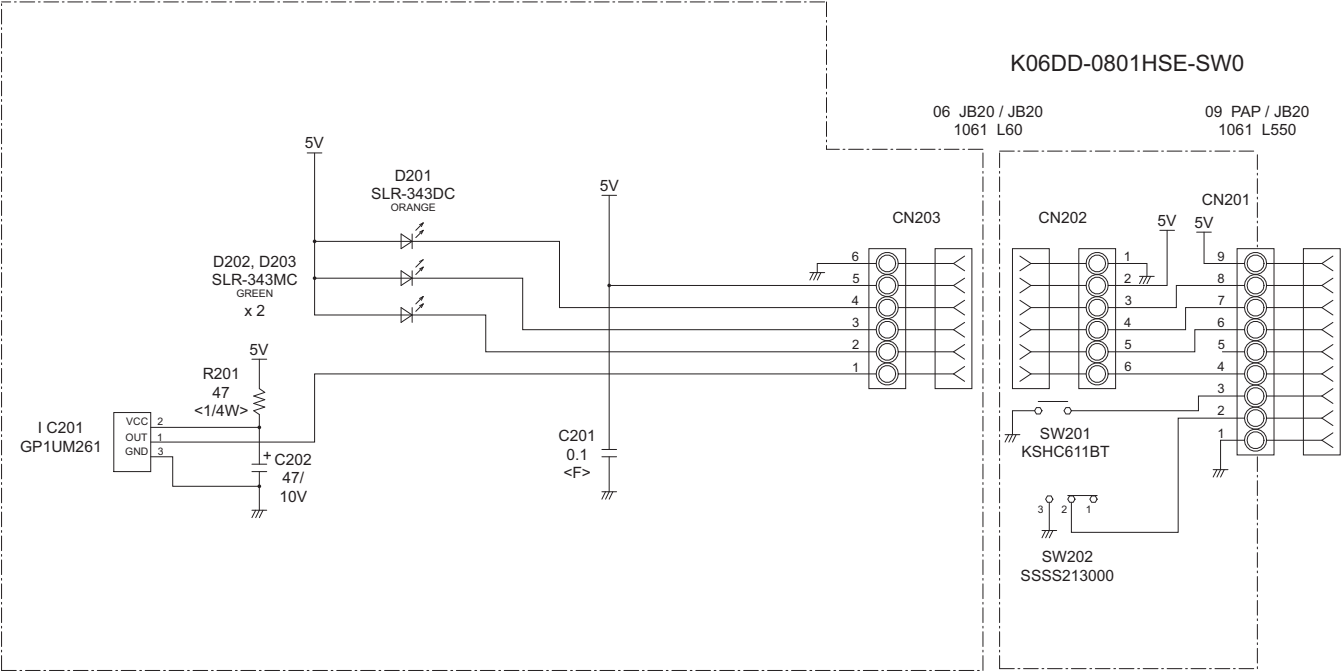


INDOOR UNIT  
MAIN PCB  
AGYG09LVCA : K09DD-1200HSE-C1  
AGYG12LVCA : K09DD-1201HSE-C1



INDOOR UNIT  
INDICATOR PCB  
K06DD-0801HSE-F0

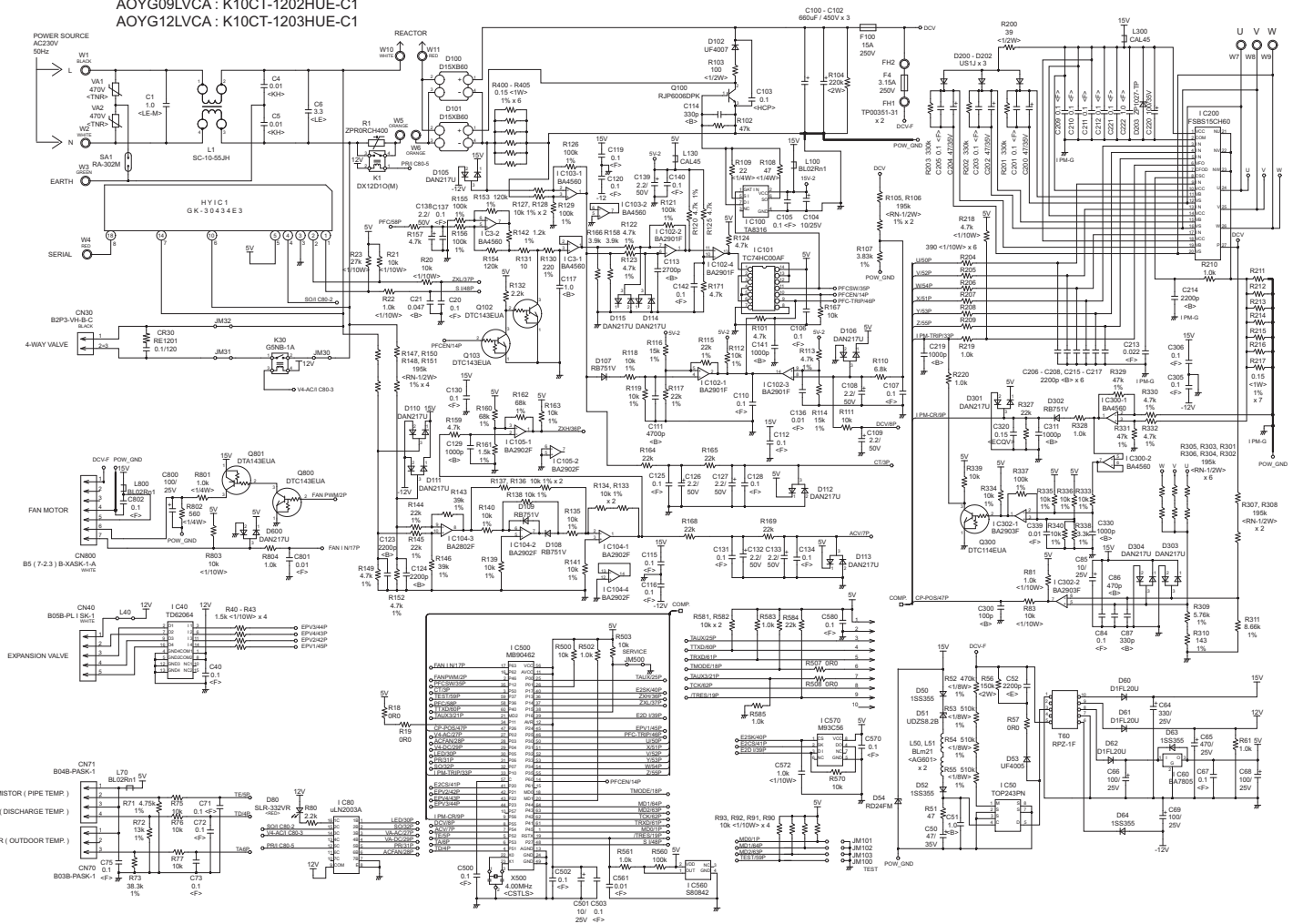
K06DD-0801HSE-D0



INVERTER ASSEMBLY  
AOYG09LVCA : EZ-01213HUE  
AOYG12LVCA : EZ-01214HUE



OUTDOOR UNIT  
MAIN PCB  
AOYG09LVCA : K10CT-1202HUE-C1  
AOYG12LVCA : K10CT-1203HUE-C1

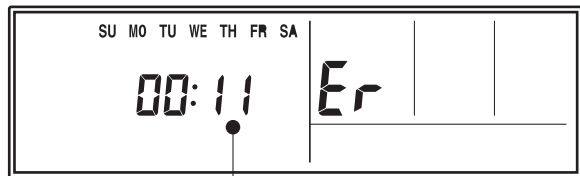


# ERROR DETECTION

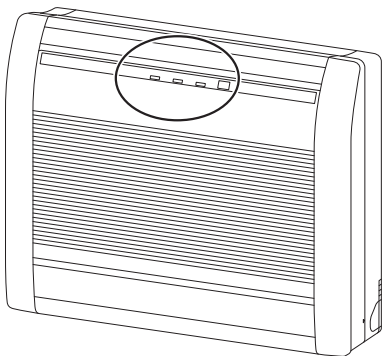
If you use a wireless remote control, the lamp on the photo detector unit will output error codes by way of blinking patterns.  
If you use a wired remote control, error codes will appear on the remote control display.  
See the lamp blinking patterns and error codes in the table.  
An error display is displayed only during operation.

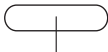

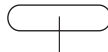
## Wired remote control display (Option)

If an error occurs, the following display will be shown.  
("Er" will appear in the set room temperature display.)



## Indoor unit display

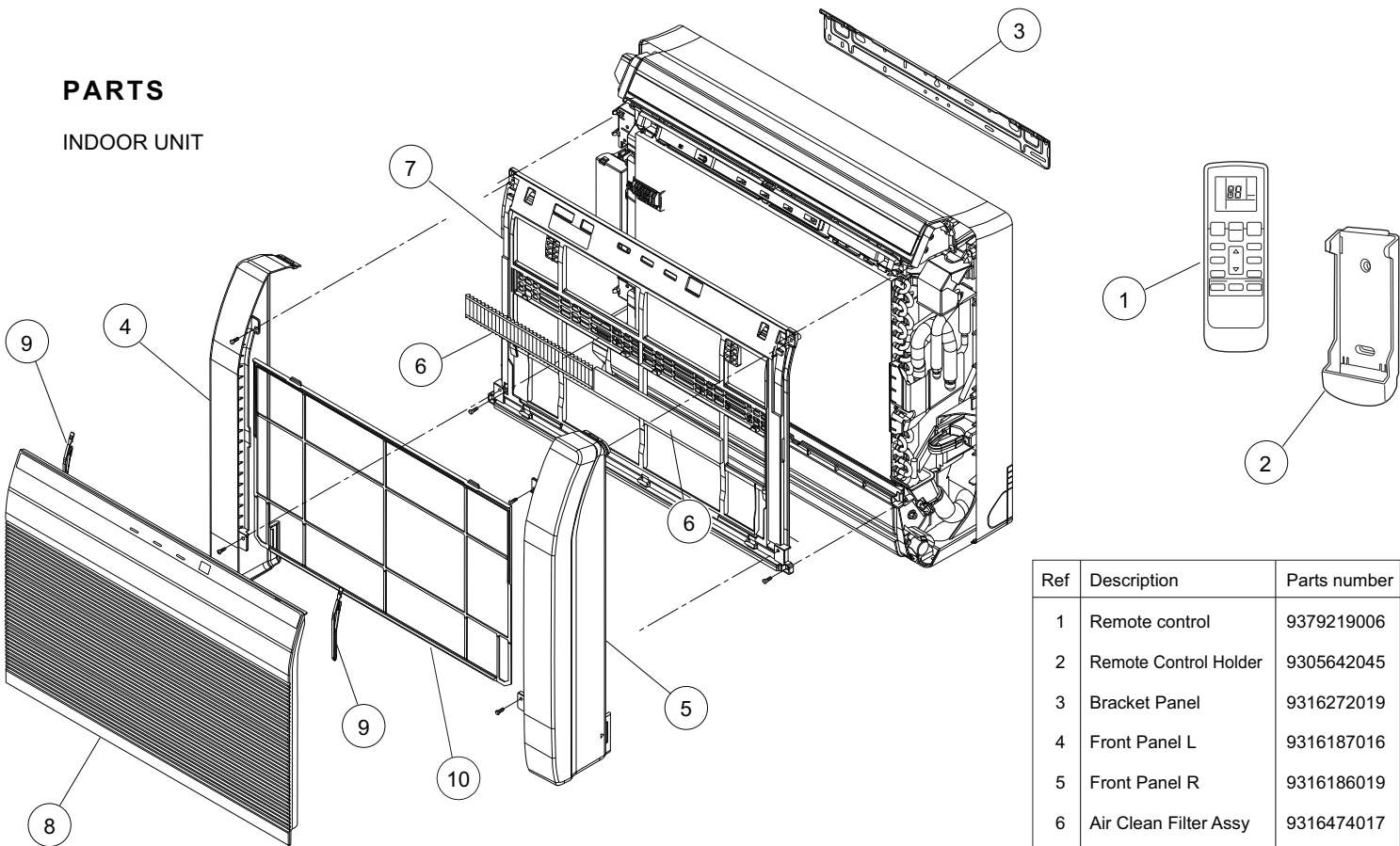


**TIMER**      **OPERATION**      **ECONOMY**  
              
 TIMER lamp (orange)      OPERATION lamp (green)      ECONOMY lamp (green)

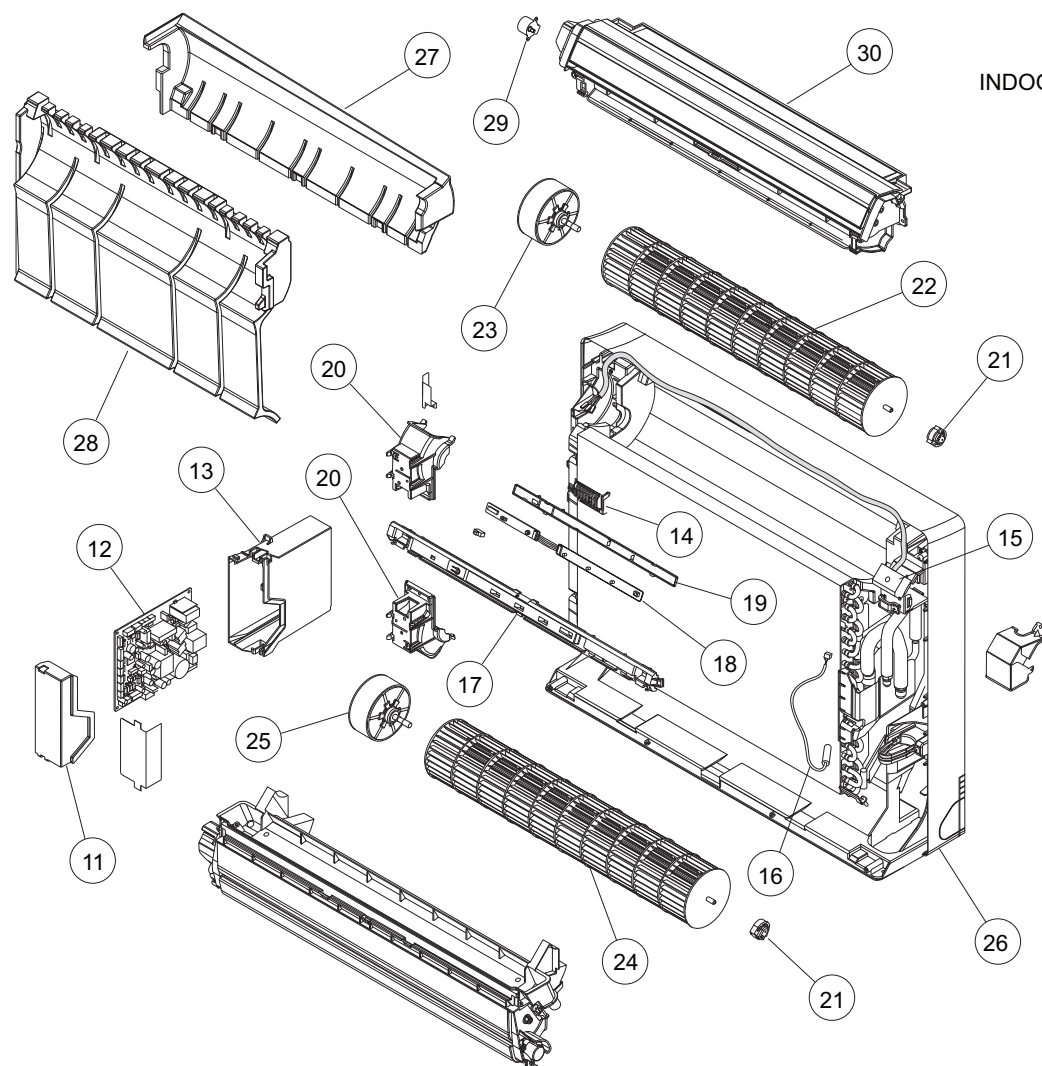
Error display			Wired remote control Error code	Description
OPERATION lamp (green)	TIMER lamp (orange)	ECONOMY lamp (green)		
● (1)	● (1)	◇	11	Serial communication error
● (1)	● (2)	◇	12	Wired remote control communication error
● (3)	● (2)	◇	32	Indoor unit PCB model information error
● (3)	● (5)	◇	35	Manual auto switch error
● (4)	● (1)	◇	41	Inlet air temp. sensor error
● (4)	● (2)	◇	42	Indoor unit Heat Ex. Middle temp. sensor error
● (5)	● (1)	◇	51	Indoor unit fan motor error
● (5)	● (7)	◇	57	Damper error
● (6)	● (2)	◇	62	Outdoor unit main PCB model information error or communication error
● (6)	● (4)	◇	64	Active filter error
● (6)	● (5)	◇	65	Trip terminal L error
● (7)	● (1)	◇	71	Discharge temp. sensor error
● (7)	● (3)	◇	73	Outdoor unit Heat Ex. liquid temp. sensor error
● (7)	● (4)	◇	74	Outdoor temp. sensor error
● (8)	● (4)	◇	84	Current sensor error
● (9)	● (4)	◇	94	Trip detection
● (9)	● (5)	◇	95	Compressor rotor position detection error (permanent stop)
● (9)	● (7)	◇	97	Outdoor unit fan motor error
● (9)	● (9)	◇	99	4-way valve error
● (10)	● (1)	◇	A1	Discharge temp. error

● : 0.5s on / 0.5s off  
 ◇ : 0.1s on / 0.1s off  
 ( ) : Number of flash

**PARTS**  
INDOOR UNIT

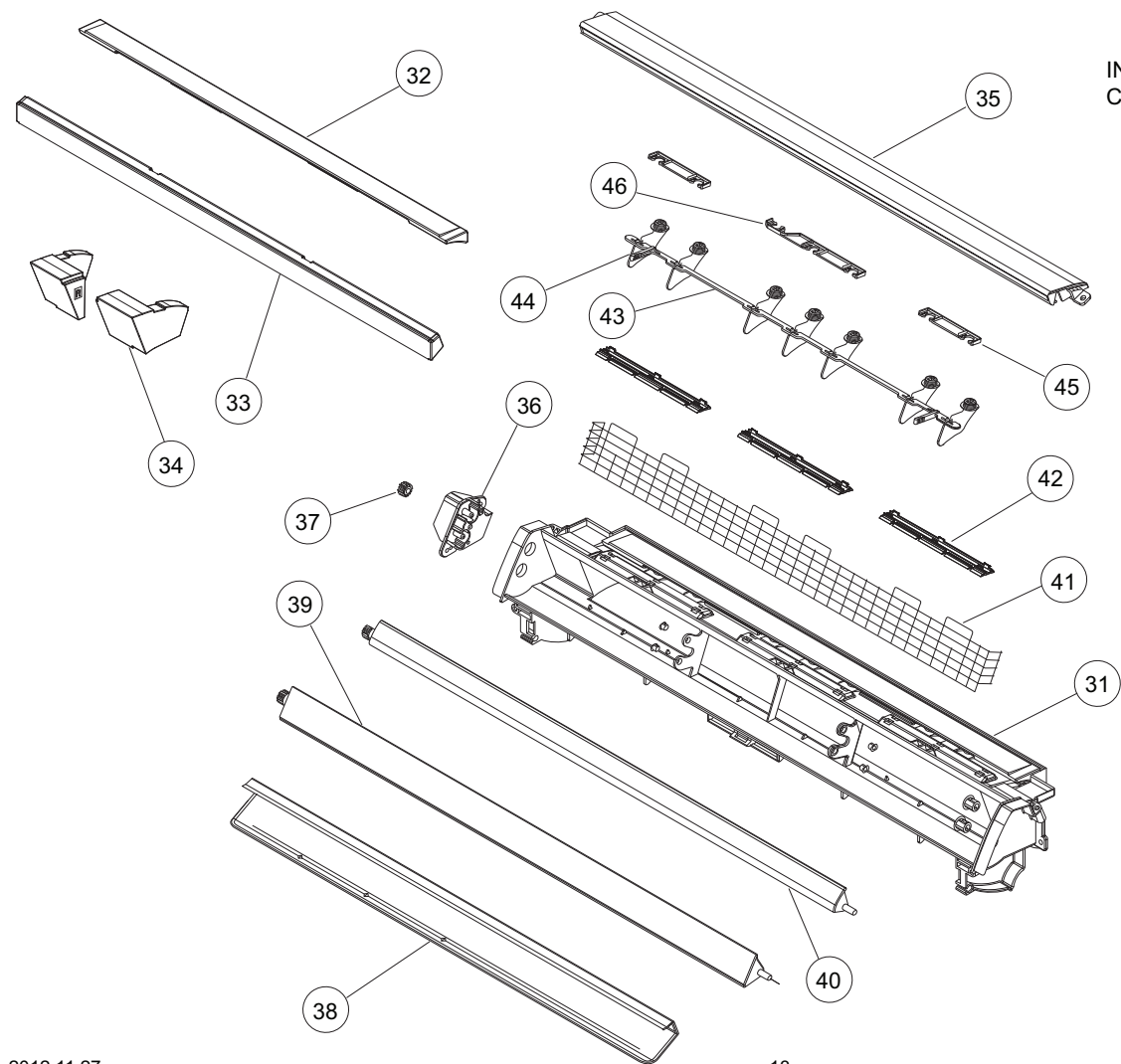


Ref	Description	Parts number
1	Remote control	9379219006
2	Remote Control Holder	9305642045
3	Bracket Panel	9316272019
4	Front Panel L	9316187016
5	Front Panel R	9316186019
6	Air Clean Filter Assy	9316474017
7	Front Panel	9316185012
8	Intake Grille Assy	9316418059
9	Rope Assy	9316458017
10	Air Filter	9316189010



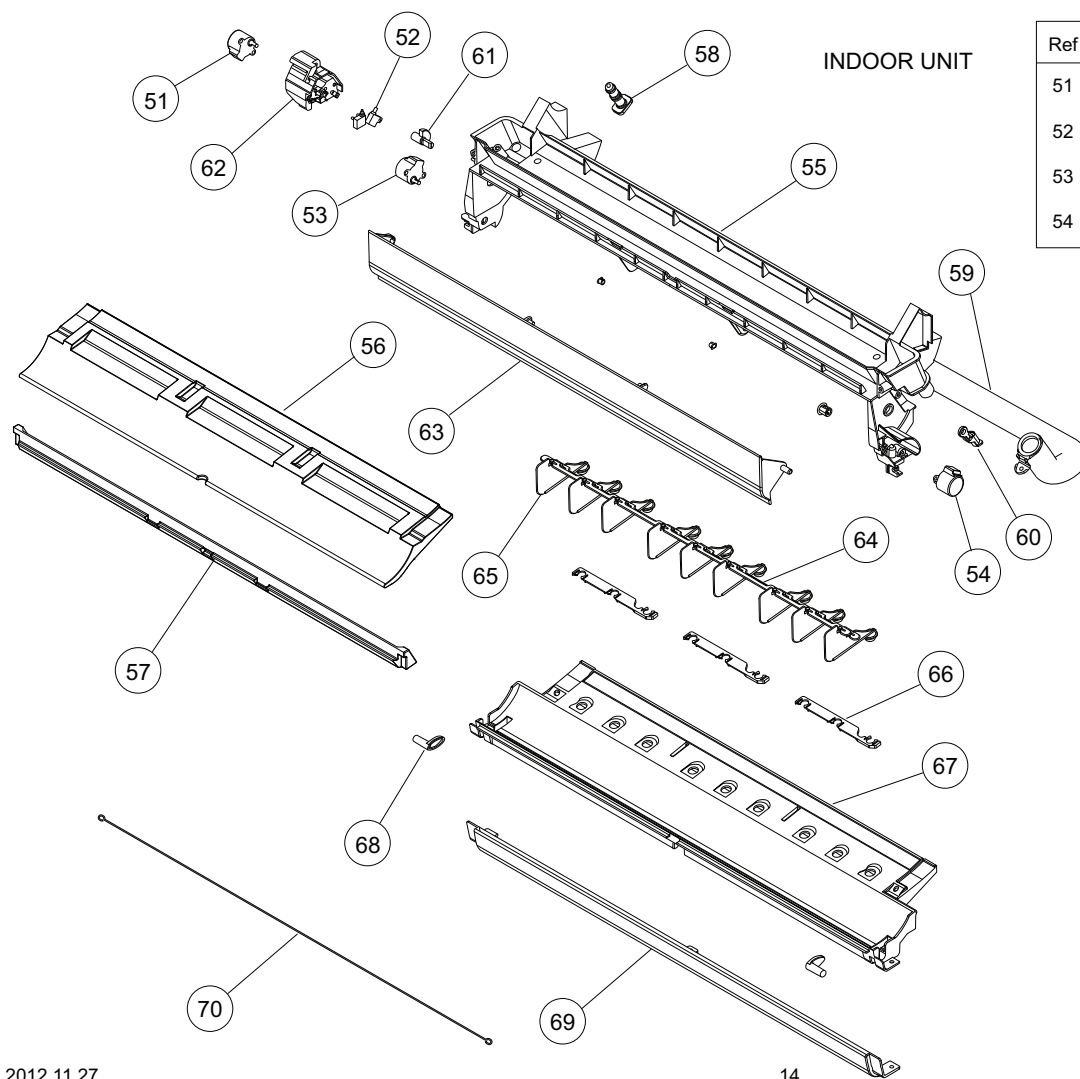
# INDOOR UNIT

Ref	Description	Parts number
11	Control Cover	9316201019
12	Main PCB (09)	9708532073
12	Main PCB (12)	9708532080
13	Control Box	9316200012
14	Thermistor Holder	9316192010
15	Terminal	9900385026
16	Pipe Thermistor	9900425012
17	Display Case	9316194014
18	Indicator PCB	9707571042
19	Display Cover	9316191013
20	Motor Holder	9316195011
21	Bearing C Assy	9306628017
22	Crossflow Fan Assy	9312004034
23	Fan Motor, MFD-14TXN	9602850006
24	Crossflow Fan B Assy	9316309012
25	Fan Motor, MFD-14SXX	9602851003
26	Base	9316193017
27	Base Cover A	9316197015
28	Base Cover B	9316373013
29	Step Motor (Up / down)	9900384043
30	Casing Assy	9316411012



INDOOR UNIT  
Casing assy

Ref	Description	Parts number
31	Casing	9316204010
32	Casing Cover B	9316273016
33	Casing Cover F	9316308015
34	Casing Cover LR	9316310018
35	Top Cover	9316207011
36	Gear Case	9316213012
37	Gear A	9309994003
38	Reinforcement	9316378018
39	Louver Z (Lower)	9316206014
40	Louver U (Upper)	9316205017
41	Fan Guard	9316211018
42	Guard Holder	9316210011
43	Joint U	9316209015
44	R and L Louver U	9316208018
45	Spacer C	9315281012
46	Spacer D	9315282019

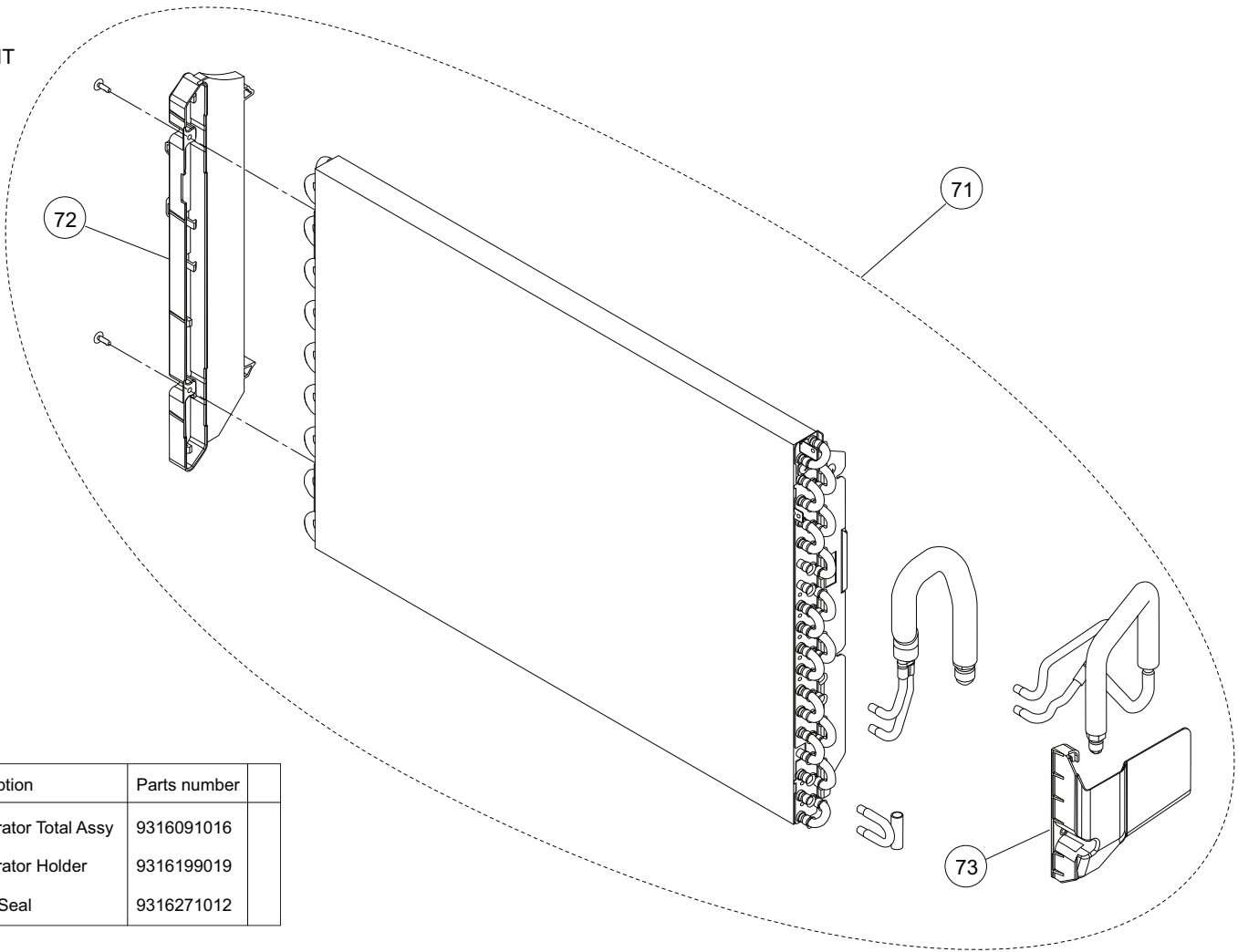


Ref	Description	Parts number
51	Motor Step (Damper)	9900384050
52	Micro Switch (Limit Switch)	9900424015
53	Motor Step (Damper Lock Left)	9900384067
54	Step Motor (Damper Lock Right)	9900384074

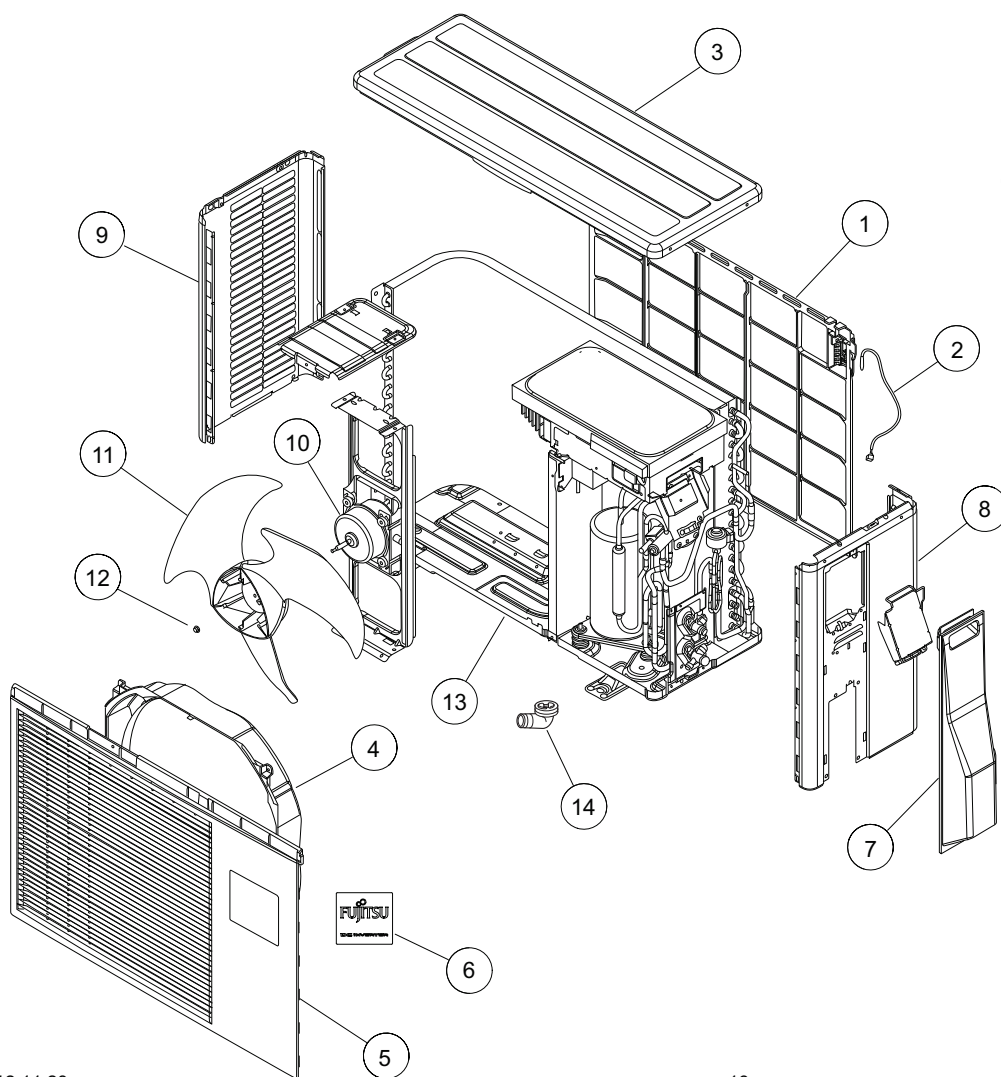
#### Drain Pan Assy

Ref	Description	Parts number
--	Drain Pan Assy	9316412019
55	Drain Pan U	9316214019
56	Drain Pan Cover B	9316386013
57	Drain Pan Cover F	9316274013
58	Drain Cap	9316177017
59	Drain Hose Assy	9314147029
60	Drain Holder	9316384019
61	Key Top	9316218017
62	Limit Switch Cover	9316217010
63	Damper	9316216013
64	Joint Z	9316335011
65	R and L Louver Z	9316334014
66	Spacer D	9315282019
67	Drain Pan Z	9316215016
68	Stopper	9316219014
69	Under Cover	9316374010
70	Fan Guard Z	9316918009

INDOOR UNIT



Ref	Description	Parts number	
71	Evaporator Total Assy	9316091016	
72	Evaporator Holder	9316199019	
73	Water Seal	9316271012	

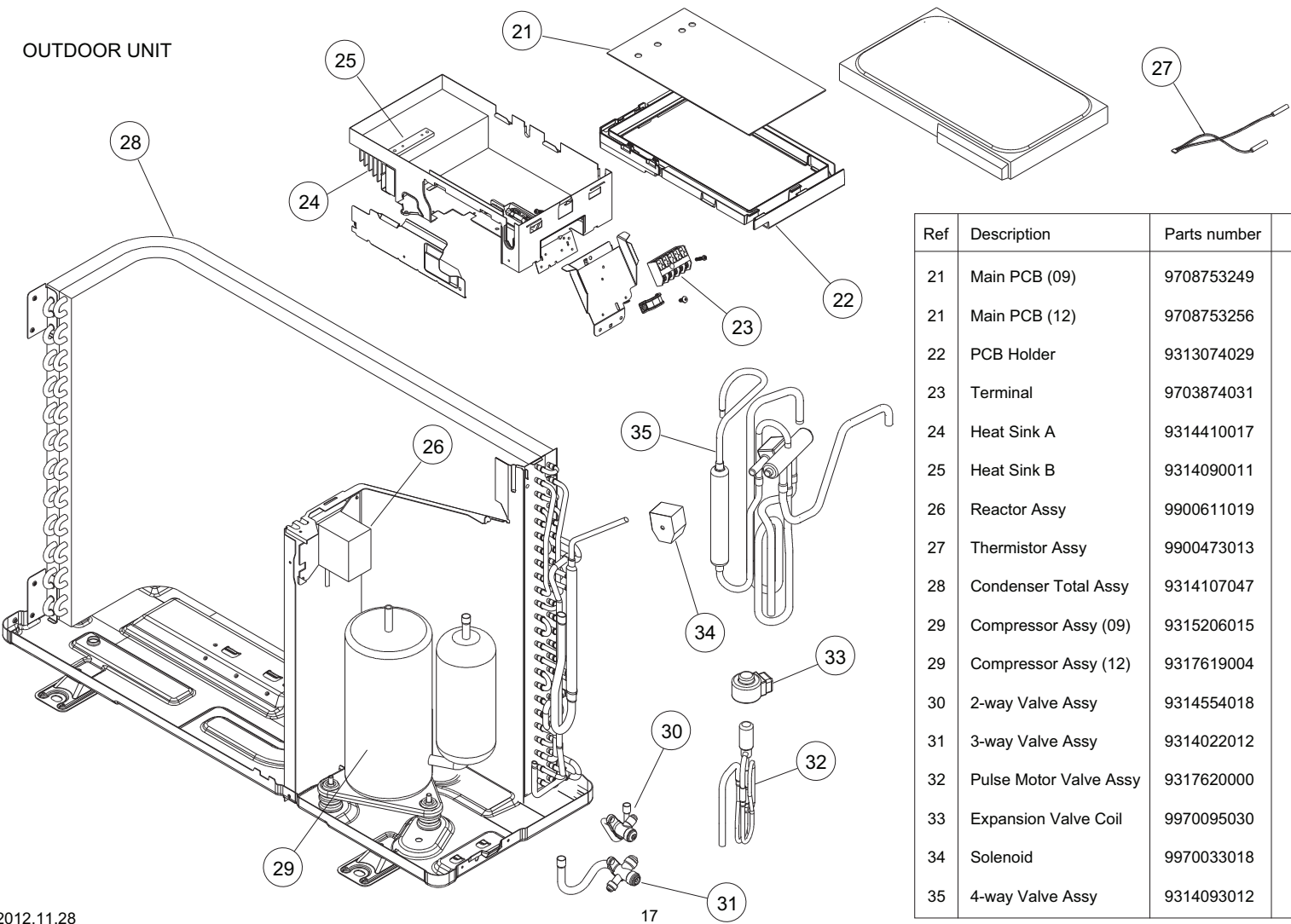


## PARTS

### OUTDOOR UNIT

Ref	Description	Parts number
1	Protective Net	9313941031
2	Outdoor Thermistor	9900544010
3	Top Panel Assy	9313988029
4	Fan Ring	9313807016
5	Front Panel	9313806026
6	Rear Emblem	9319151007
7	Switch Cover	9310979020
8	Cabinet Right Assy	9313994082
9	Cabinet Left Assy	9313991012
10	Fan Motor	9602111015
11	Propeller Fan	9313808013
12	Nut with Washer	9304902003
13	Base Assy	9316885004
14	Drain Assy	9303029022

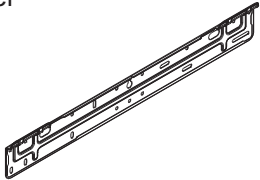


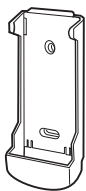
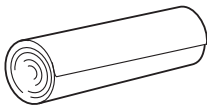


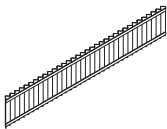
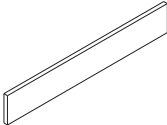
OUTDOOR UNIT



Ref	Description	Parts number
21	Main PCB (09)	9708753249
21	Main PCB (12)	9708753256
22	PCB Holder	9313074029
23	Terminal	9703874031
24	Heat Sink A	9314410017
25	Heat Sink B	9314090011
26	Reactor Assy	9900611019
27	Thermistor Assy	9900473013
28	Condenser Total Assy	9314107047
29	Compressor Assy (09)	9315206015
29	Compressor Assy (12)	9317619004
30	2-way Valve Assy	9314554018
31	3-way Valve Assy	9314022012
32	Pulse Motor Valve Assy	9317620000
33	Expansion Valve Coil	9970095030
34	Solenoid	9970033018
35	4-way Valve Assy	9314093012

## ACCESSORIES

### INDOOR UNIT

Name and Shape	Q'ty	Use	Part No.
Bracket panel 	1	For indoor unit installation	9316272019
Remote control 	1	Use for air conditioner operation	9379219006
Battery (penlight) 	2	For remote control	0600185541
Remote control holder 	1	Hold a remote control	9305642045
Cloth tape 	1	For indoor unit installation	9310519004
Tapping screw (big) ( $\phi 4 \times 25$ ) 	9	For wall hook bracket and body installation	0700076046
Tpping screw (small) ( $\phi 3 \times 12$ ) 	2	Install a remote control holder	0700019036
Electric filter 	1	With 2 sheets	9312153015
Ion deodrant filter 	1	With 2 sheets	9311925033