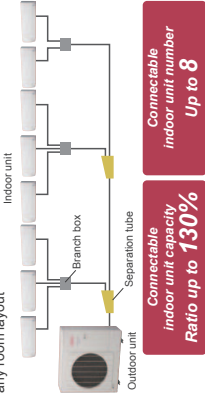


INVERTER 8 Rooms Multi

Flexible Design & Easy Installation

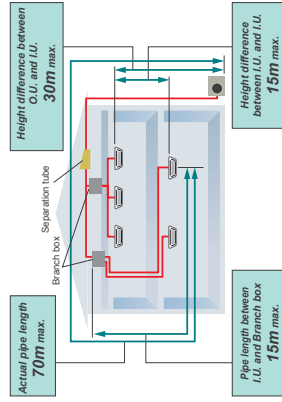
Large capacity connection

Up to 8 indoor units can be connected to one outdoor unit. A maximum of 130% indoor unit connectable capacity. Match any room layout



Long piping design

Can be installed in high rise condominium or commercial building



All flare piping connection and simple installation that minimizes wiring mistakes.

Wiring mistake automatic check function

The check operation detects wiring mistakes in advance.

Simple all flare piping connection

— Piping
— Power & Transmission line
— Transmission line
..... Power supply

Simple wiring connection that is not cross connection

Wiring connection is the same as single split or multi type.

Branch Box can be mounted flexibly.

Horizontal Wall Mounting

Install the unit with its top side facing upwards.

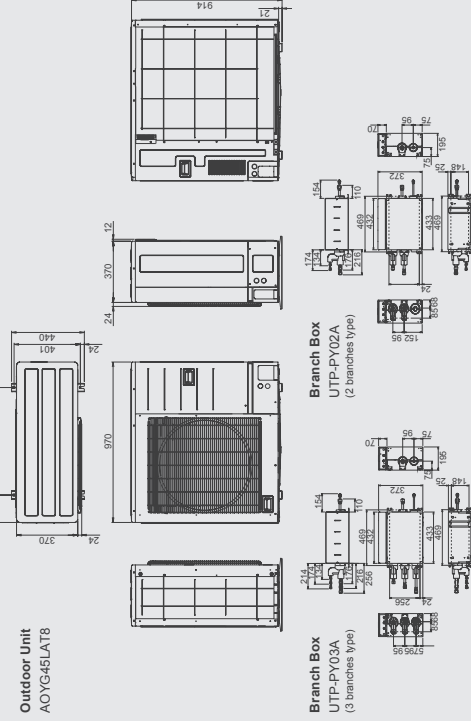
Vertical Wall Mounting

Install the unit with the control box facing upwards.

Dimensions

Outdoor Unit
AOYG45LAT8

(Unit : mm)



Specifications

Model name		AOYG45LAT8	
Maximum Connectable Indoor Unit	Cooling	8	
Indoor unit connectable capacity	Cooling	11.2 ~ 18.2	
Power source	V/φ/Hz	230/150	
	Rated Capacity	Cooling	14.0
Input Power	Heating	Cooling	16.0
	Heating	Heating	5.20
	Heating	Heating	5.07
Air flow rate	Cooling	Cooling	4.650
	Heating	Heating	4.600
Sound pressure level	Cooling	Cooling	56
Heat exchanger fin	Heating	Heating	58
Net Dimensions H X W X D		Plate fin coil	914 x 970 x 70
Weight			98 (217)
Piping Connections (Small / Large)			9.52/15.88
Max Pipe Length			115 (Total)
Max Height Difference (O.U. ~ I.U.)			30
Operating range	Cooling		-5 to 46
Refrigerant	Heating		-15 to 24
			R410A

Model name		UTP-PY03A		UTP-PY02A	
Connectable indoor unit		1 to 3 Units		1 to 2 Units	
Power source		10 230V ~ 50Hz		10 230V ~ 50Hz	
Available voltage range		198~264V		198~264V	
Power consumption	W	10		10	
Running current	A	0.05		0.05	
Dimensions (HxWxD)	mm	195x433x370		195x433x370	
Weight	kg	9		9	
Connection pipe	Size	Main: 9.52x1, Branch: 6.35x3		Main: 9.52x1, Branch: 6.35x2	
	Method	Main: 15.88x1, Branch: 12.7x3		Main: 15.88x1, Branch: 12.7x2	

Note: Specifications are based on the following conditions.
Power source of specifications: 230V.

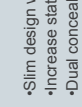
Indoor Units for Multi System

INVERTER Slim Duct

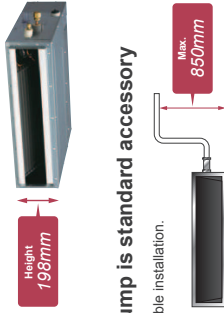
- Slim design with drain pump
- Increase static pressure range
- Dual concealed type

ARYG07LL ARYG09LL ARYG12LL ARYG14LL ARYG18LL





Slim design



Drain pump is standard accessory

It allows flexible installation.

Selectable with a wide range of static pressure

By using DC fan motor, it is possible to change the static pressure range 0 to 90 Pa. The change of static pressure range is possible by remote controller.

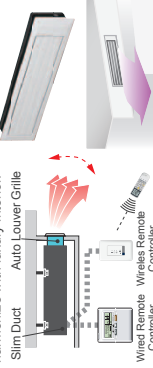
Static pressure range 0 to 90 Pa

Flexible installation



Auto Louver Grille Kit (Option)

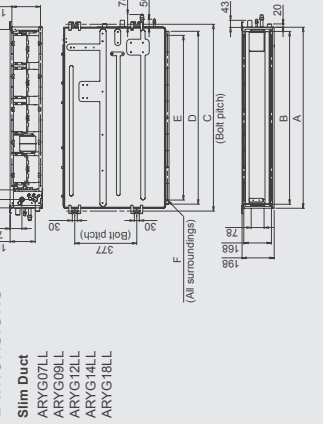
Simple flat Auto Louver will provide comfort airflow and harmonize with luxury interior.



Optional parts

Simple Remote Controller: UTY-RSNYM
 IR Receiver Unit: UTY-LRHYM
 Remote Sensor Unit: UTY-XSZX
 External Control Set: UTD-ECS5A
 Auto Louver Grille Kit: UTD-GXSA-W (for ARYG07/09/12/14LL)
 UTD-GXSB-W (for ARYG18LL)

Dimensions



	ARYG07/09/12/14LL	ARYG18LL
A	700	900
B	650	850
C	734	934
D	650	850
E	P100x6=800	P100x6=800
F	18x605	22x605
G	574	774

INVERTER Compact Wall Mounted

• Flat design harmonizes interior

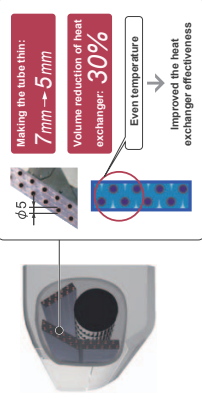
ASYG07LJ ASYG09LJ ASYG12LJ




Compact flat design



High density heat exchanger arrangement



Air clean filter

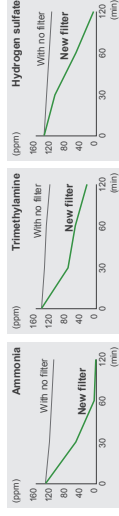


The filter deodorizes by powerfully decomposing absorbed odors using the oxidizing and reducing effects of ions generated by the ultra-fine-particle ceramic.

(*The filter can be used for approx. 3 years if it is washed under water to restore its surface action when it is dry.)

Fine dust, invisible mold spores, and harmful microorganisms are absorbed onto the filter by static electricity, and further growth is inhibited and deactivated by the polyphenol extracted from apples.

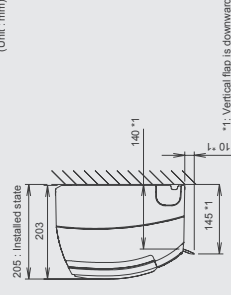
Deodorizing effect (Odor reduction rate)



Testing organization : Environmental Sanitary Inspection Center Test method : Deodorization Test

Dimensions

Model name
 ASYG07LJ
 ASYG09LJ
 ASYG12LJ



(Unit : mm)

Indoor Units for Multi System

INVERTER

Wall Mounted

- Powerful airflow
- Double auto swing



Wireless R.C.

ASYG18LF ASYG24LF

Optional parts

- Simple Remote Controller: UTY-RSNYM
- Wired Remote Controller: UTY-RNNYM
- External Connect Kit: UTY-XWZX
- Apple Catechin Filter: UTR-FA3-1
- Ion Decolorization Filter: UTR-FA3-2

INVERTER

Floor

- 2-Fan & wide airflow



Wireless R.C.

AGYG09LV AGYG12LV AGYG14LV

Optional parts

- Simple Remote Controller: UTY-RSNYM
- Wired Remote Controller: UTY-RNNYM
- External Connect Kit: UTY-XWZX
- Apple Catechin Filter: UTR-FC03-2
- Ion Decolorization Filter: UTR-FC03-3
- Half Concealed Kit: UTR-STA

INVERTER

Floor/Ceiling

- Dual installation
- Double auto swing



Wireless R.C.

ABYG14LV ABYG18LV

Optional parts

- Simple Remote Controller: UTY-RSNYM
- Wired Remote Controller: UTY-RNNYM
- External Connect Kit: UTY-XWZX

INVERTER

Compact Cassette

- Powerful wide airflow & Quiet operation



Wireless R.C.

AUYG07LV AUYG14LV AUYG09LV AUYG18LV

Optional parts

- Simple Remote Controller: UTY-RSNYM
- Wired Remote Controller: UTY-RNNYM
- Grill Kit: UTY-UFYD-W
- Air Outlet Shutter Plate: UTY-YDZB
- Insulation Kit For High Humidity: UTZ-AXGC
- Fresh Air Intake Kit: UTZ-VXAA
- External Connect Kit: UTY-XWZX

Specifications of All Indoor Units

SPECIFICATIONS (WALL MOUNTED TYPE)

Model No.	Indoor unit	ASYG07LV	ASYG09LV	ASYG12LV	ASYG18LV	ASYG24LF
KW Class	kW	2.0	2.5	3.5	5.0	7.0
Power Source	V/φ/Hz	230/1/50	230/1/50	230/1/50	230/1/50	230/1/50
Noise	Cooling HMLQ dB(A)	36.32/29.21	37.33/29.21	40.36/30.21	43.37/33.26	48.42/37.33
Air Flow	Cooling HMLQ m³/h	560/500/430/310	600/520/430/310	660/560/460/310	900/740/620/450	1120/900/740/620
Net Dimension	mm	560/520/430/330	600/520/430/330	660/560/460/330	900/740/620/450	1100/900/740/620
Weight	kg(lbs)	280x790x203	280x790x203	280x790x203	320x882x238	320x882x238
Pipe Size	mm	Ø6.35/Ø9.52	Ø6.35/Ø9.52	Ø6.35/Ø9.52	Ø6.35/Ø12.7	Ø6.35/Ø15.88

SPECIFICATIONS (FLOOR TYPE)

Model No.	Indoor unit	AGYG09LV	AGYG12LV	AGYG14LV
KW Class	kW	2.5	3.5	4.0
Power Source	V/φ/Hz	230/1/50	230/1/50	230/1/50
Noise	Cooling HMLQ dB(A)	39.34/29.22	42.35/30.22	44.36/31.22
Air Flow	Cooling HMLQ m³/h	530/440/360/270	600/490/380/270	660/520/400/270
Net Dimension	mm	530/440/270	600/490/270	660/520/270
Weight	kg(lbs)	600x740x200	660x740x200	660x740x200
Pipe Size	mm	Ø6.35/Ø9.52	Ø6.35/Ø9.52	Ø6.35/Ø12.7

SPECIFICATIONS (FLOOR/CEILING TYPE)

Model No.	Indoor unit	ABYG14LV	ABYG18LV
KW Class	kW	4.0	5.0
Power Source	V/φ/Hz	230/1/50	230/1/50
Noise	Cooling HMLQ dB(A)	38.24/29.20(Under ceiling)	41.25/29.20(Under ceiling)
Air Flow	Cooling HMLQ m³/h	393/373/363/292(Floor console)	444/413/373/351(Floor console)
Net Dimension	mm	393/373/363/292(Floor console)	444/413/373/351(Floor console)
Weight	kg(lbs)	640/590/540/480	760/700/560/500
Pipe Size	mm	Ø6.35/Ø9.52	Ø6.35/Ø12.7

SPECIFICATIONS (COMPACT CASSETTE TYPE)

Model No.	Indoor unit	AUYG07LV	AUYG09LV	AUYG12LV	AUYG14LV	AUYG18LV
KW Class	kW	2.0	2.5	3.5	4.0	5.0
Power Source	V/φ/Hz	230/1/50	230/1/50	230/1/50	230/1/50	230/1/50
Noise	Cooling HMLQ dB(A)	33.31/29.27	33.31/29.27	37.33/31.28	40.35/32.29	42.37/33.29
Air Flow	Cooling HMLQ m³/h	540/480/440/390	540/480/440/390	610/530/470/410	680/580/490/410	750/610/520/410
Net Dimension	mm	540/480/440/390	540/480/440/390	610/530/470/410	700/620/500/430	800/710/600/450
Weight	kg(lbs)	245x570x570	245x570x570	245x570x570	245x570x570	245x570x570
Pipe Size	mm	Ø6.35/Ø9.52	Ø6.35/Ø9.52	Ø6.35/Ø9.52	Ø6.35/Ø12.7	Ø6.35/Ø12.7

SPECIFICATIONS (SLIM DUCT TYPE)

Model No.	Indoor unit	ARYG07LV	ARYG09LV	ARYG12LV	ARYG14LV	ARYG18LV
KW Class	kW	2.0	2.5	3.5	4.0	5.0
Power Source	V/φ/Hz	230/1/50	230/1/50	230/1/50	230/1/50	230/1/50
Noise	Cooling HMLQ dB(A)	28.26/25.24	28.27/26.25	29.28/27.26	32.30/28.26	32.31/30.29
Air Flow	Cooling HMLQ m³/h	550/480/470/440	600/550/500/450	650/600/550/480	800/700/600/480	940/880/800/570
Net Dimension	mm	550/480/470/440	600/550/500/450	650/600/550/480	800/700/600/480	940/880/800/570
Weight	kg(lbs)	198x700x620	198x700x620	198x700x620	198x700x620	198x700x620
Pipe Size	mm	Ø6.35/Ø9.52	Ø6.35/Ø9.52	Ø6.35/Ø9.52	Ø6.35/Ø12.7	Ø6.35/Ø12.7
External static pressure	mm	Standard	Standard	Standard	Standard	Standard
Drain pump						

INVERTER Multi Combination Table

2 Rooms Multi cooling

AOYG18LAC2	Combination of indoor unit	COOLING OPERATION						EER	Energy efficiency class
		Room 1		Room 2		Total Capacity (min-max)			
		KW	Room 1 Cooling Capacity (min-max)	KW	Room 2 Cooling Capacity (min-max)	KW	Total Capacity (min-max)		
1	Room	2.70	2.70 (1.2-2.7)	2.70	2.70 (1.2-2.7)	5.40 (0.30-5.4)	4.58	A	
2	Room	2.70	2.70 (1.2-2.7)	2.70	2.70 (1.2-2.7)	5.40 (0.30-5.4)	3.56	A	
3	Room	2.70	2.70 (1.2-2.7)	2.70	2.70 (1.2-2.7)	5.40 (0.30-5.4)	3.57	A	
4	Room	2.70	2.70 (1.2-2.7)	2.70	2.70 (1.2-2.7)	5.40 (0.30-5.4)	3.57	A	
5	Room	2.70	2.70 (1.2-2.7)	2.70	2.70 (1.2-2.7)	5.40 (0.30-5.4)	3.57	A	
6	Room	2.70	2.70 (1.2-2.7)	2.70	2.70 (1.2-2.7)	5.40 (0.30-5.4)	3.57	A	
7	Room	2.70	2.70 (1.2-2.7)	2.70	2.70 (1.2-2.7)	5.40 (0.30-5.4)	3.57	A	
8	Room	2.70	2.70 (1.2-2.7)	2.70	2.70 (1.2-2.7)	5.40 (0.30-5.4)	3.57	A	
9	Room	2.70	2.70 (1.2-2.7)	2.70	2.70 (1.2-2.7)	5.40 (0.30-5.4)	3.57	A	
10	Room	2.70	2.70 (1.2-2.7)	2.70	2.70 (1.2-2.7)	5.40 (0.30-5.4)	3.57	A	
11	Room	2.70	2.70 (1.2-2.7)	2.70	2.70 (1.2-2.7)	5.40 (0.30-5.4)	3.57	A	
12	Room	2.70	2.70 (1.2-2.7)	2.70	2.70 (1.2-2.7)	5.40 (0.30-5.4)	3.57	A	

3 Rooms Multi cooling

AOYG18LAC3	Combination of indoor unit	COOLING OPERATION						EER	Energy efficiency class		
		Room 1		Room 2		Room 3				Total Capacity (min-max)	
		KW	Room 1 Cooling Capacity (min-max)	KW	Room 2 Cooling Capacity (min-max)	KW	Room 3 Cooling Capacity (min-max)			KW	Total Capacity (min-max)
1	Room	2.70	2.70 (1.2-2.7)	2.70	2.70 (1.2-2.7)	2.70	2.70 (1.2-2.7)	8.10 (0.30-8.1)	3.54	A	
2	Room	2.70	2.70 (1.2-2.7)	2.70	2.70 (1.2-2.7)	2.70	2.70 (1.2-2.7)	8.10 (0.30-8.1)	3.56	A	
3	Room	2.70	2.70 (1.2-2.7)	2.70	2.70 (1.2-2.7)	2.70	2.70 (1.2-2.7)	8.10 (0.30-8.1)	3.56	A	
4	Room	2.70	2.70 (1.2-2.7)	2.70	2.70 (1.2-2.7)	2.70	2.70 (1.2-2.7)	8.10 (0.30-8.1)	3.56	A	
5	Room	2.70	2.70 (1.2-2.7)	2.70	2.70 (1.2-2.7)	2.70	2.70 (1.2-2.7)	8.10 (0.30-8.1)	3.56	A	
6	Room	2.70	2.70 (1.2-2.7)	2.70	2.70 (1.2-2.7)	2.70	2.70 (1.2-2.7)	8.10 (0.30-8.1)	3.56	A	
7	Room	2.70	2.70 (1.2-2.7)	2.70	2.70 (1.2-2.7)	2.70	2.70 (1.2-2.7)	8.10 (0.30-8.1)	3.56	A	
8	Room	2.70	2.70 (1.2-2.7)	2.70	2.70 (1.2-2.7)	2.70	2.70 (1.2-2.7)	8.10 (0.30-8.1)	3.56	A	
9	Room	2.70	2.70 (1.2-2.7)	2.70	2.70 (1.2-2.7)	2.70	2.70 (1.2-2.7)	8.10 (0.30-8.1)	3.56	A	
10	Room	2.70	2.70 (1.2-2.7)	2.70	2.70 (1.2-2.7)	2.70	2.70 (1.2-2.7)	8.10 (0.30-8.1)	3.56	A	
11	Room	2.70	2.70 (1.2-2.7)	2.70	2.70 (1.2-2.7)	2.70	2.70 (1.2-2.7)	8.10 (0.30-8.1)	3.56	A	
12	Room	2.70	2.70 (1.2-2.7)	2.70	2.70 (1.2-2.7)	2.70	2.70 (1.2-2.7)	8.10 (0.30-8.1)	3.56	A	

2 Rooms Multi heating

AOYG18LAC2	Combination of indoor unit	HEATING OPERATION						COP	Energy efficiency class
		Room 1		Room 2		Total Capacity (min-max)			
		KW	Room 1 Heating Capacity (min-max)	KW	Room 2 Heating Capacity (min-max)	KW	Total Capacity (min-max)		
1	Room	2.70	2.70 (1.2-2.7)	2.70	2.70 (1.2-2.7)	5.40 (0.30-5.4)	4.22	A	
2	Room	2.70	2.70 (1.2-2.7)	2.70	2.70 (1.2-2.7)	5.40 (0.30-5.4)	3.24	A	
3	Room	2.70	2.70 (1.2-2.7)	2.70	2.70 (1.2-2.7)	5.40 (0.30-5.4)	3.24	A	
4	Room	2.70	2.70 (1.2-2.7)	2.70	2.70 (1.2-2.7)	5.40 (0.30-5.4)	3.24	A	
5	Room	2.70	2.70 (1.2-2.7)	2.70	2.70 (1.2-2.7)	5.40 (0.30-5.4)	3.24	A	
6	Room	2.70	2.70 (1.2-2.7)	2.70	2.70 (1.2-2.7)	5.40 (0.30-5.4)	3.24	A	
7	Room	2.70	2.70 (1.2-2.7)	2.70	2.70 (1.2-2.7)	5.40 (0.30-5.4)	3.24	A	
8	Room	2.70	2.70 (1.2-2.7)	2.70	2.70 (1.2-2.7)	5.40 (0.30-5.4)	3.24	A	
9	Room	2.70	2.70 (1.2-2.7)	2.70	2.70 (1.2-2.7)	5.40 (0.30-5.4)	3.24	A	
10	Room	2.70	2.70 (1.2-2.7)	2.70	2.70 (1.2-2.7)	5.40 (0.30-5.4)	3.24	A	
11	Room	2.70	2.70 (1.2-2.7)	2.70	2.70 (1.2-2.7)	5.40 (0.30-5.4)	3.24	A	
12	Room	2.70	2.70 (1.2-2.7)	2.70	2.70 (1.2-2.7)	5.40 (0.30-5.4)	3.24	A	

Note: -Indoor unit combinations shown here are the patterns of units operating, not patterns of units connectable. However, at least 2 or more indoor units should be connected.
 -Cooling capacity is based on 27°CDB (indoor temperature), 35°CDB (outdoor temperature).
 -Pipe Length: 7.5m. Height difference: 0m (Outdoor unit to Indoor unit)

*1: When ASYG18L is connected, connect at least 1 wall mounted type for 9kBTU.

3 Rooms Multi heating

AOYG18LAC3	Combination of indoor unit	HEATING OPERATION						COP	Energy efficiency class		
		Room 1		Room 2		Room 3				Total Capacity (min-max)	
		KW	Room 1 Heating Capacity (min-max)	KW	Room 2 Heating Capacity (min-max)	KW	Room 3 Heating Capacity (min-max)			KW	Total Capacity (min-max)
1	Room	2.70	2.70 (1.2-2.7)	2.70	2.70 (1.2-2.7)	2.70	2.70 (1.2-2.7)	8.10 (0.30-8.1)	3.25	C	
2	Room	2.70	2.70 (1.2-2.7)	2.70	2.70 (1.2-2.7)	2.70	2.70 (1.2-2.7)	8.10 (0.30-8.1)	3.26	C	
3	Room	2.70	2.70 (1.2-2.7)	2.70	2.70 (1.2-2.7)	2.70	2.70 (1.2-2.7)	8.10 (0.30-8.1)	3.26	C	
4	Room	2.70	2.70 (1.2-2.7)	2.70	2.70 (1.2-2.7)	2.70	2.70 (1.2-2.7)	8.10 (0.30-8.1)	3.26	C	
5	Room	2.70	2.70 (1.2-2.7)	2.70	2.70 (1.2-2.7)	2.70	2.70 (1.2-2.7)	8.10 (0.30-8.1)	3.26	C	
6	Room	2.70	2.70 (1.2-2.7)	2.70	2.70 (1.2-2.7)	2.70	2.70 (1.2-2.7)	8.10 (0.30-8.1)	3.26	C	
7	Room	2.70	2.70 (1.2-2.7)	2.70	2.70 (1.2-2.7)	2.70	2.70 (1.2-2.7)	8.10 (0.30-8.1)	3.26	C	
8	Room	2.70	2.70 (1.2-2.7)	2.70	2.70 (1.2-2.7)	2.70	2.70 (1.2-2.7)	8.10 (0.30-8.1)	3.26	C	
9	Room	2.70	2.70 (1.2-2.7)	2.70	2.70 (1.2-2.7)	2.70	2.70 (1.2-2.7)	8.10 (0.30-8.1)	3.26	C	
10	Room	2.70	2.70 (1.2-2.7)	2.70	2.70 (1.2-2.7)	2.70	2.70 (1.2-2.7)	8.10 (0.30-8.1)	3.26	C	
11	Room	2.70	2.70 (1.2-2.7)	2.70	2.70 (1.2-2.7)	2.70	2.70 (1.2-2.7)	8.10 (0.30-8.1)	3.26	C	
12	Room	2.70	2.70 (1.2-2.7)	2.70	2.70 (1.2-2.7)	2.70	2.70 (1.2-2.7)	8.10 (0.30-8.1)	3.26	C	

2 Rooms Multi heating

AOYG18LAC2	Combination of indoor unit	HEATING OPERATION						COP	Energy efficiency class
		Room 1		Room 2		Total Capacity (min-max)			
		KW	Room 1 Heating Capacity (min-max)	KW	Room 2 Heating Capacity (min-max)	KW	Total Capacity (min-max)		
1	Room	2.70	2.70 (1.2-2.7)	2.70	2.70 (1.2-2.7)	5.40 (0.30-5.4)	4.22	A	
2	Room	2.70	2.70 (1.2-2.7)	2.70	2.70 (1.2-2.7)	5.40 (0.30-5.4)	3.24	A	
3	Room	2.70	2.70 (1.2-2.7)	2.70	2.70 (1.2-2.7)	5.40 (0.30-5.4)	3.24	A	
4	Room	2.70	2.70 (1.2-2.7)	2.70	2.70 (1.2-2.7)	5.40 (0.30-5.4)	3.24	A	
5	Room	2.70	2.70 (1.2-2.7)	2.70	2.70 (1.2-2.7)	5.40 (0.30-5.4)	3.24	A	
6	Room	2.70	2.70 (1.2-2.7)	2.70	2.70 (1.2-2.7)	5.40 (0.30-5.4)	3.24	A	
7	Room	2.70	2.70 (1.2-2.7)	2.70	2.70 (1.2-2.7)	5.40 (0.30-5.4)	3.24	A	
8	Room	2.70	2.70 (1.2-2.7)	2.70	2.70 (1.2-2.7)	5.40 (0.30-5.4)	3.24	A	
9	Room	2.70	2.70 (1.2-2.7)	2.70	2.70 (1.2-2.7)	5.40 (0.30-5.4)	3.24	A	
10	Room	2.70	2.70 (1.2-2.7)	2.70	2.70 (1.2-2.7)	5.40 (0.30-5.4)	3.24	A	
11	Room	2.70	2.70 (1.2-2.7)	2.70	2.70 (1.2-2.7)	5.40 (0.30-5.4)	3.24	A	
12	Room	2.70	2.70 (1.2-2.7)	2.70	2.70 (1.2-2.7)	5.40 (0.30-5.4)	3.24	A	

Note: -Indoor unit combinations shown here are the patterns of units operating, not patterns of units connectable. However, at least 2 or more indoor units should be connected.
 -Heating capacity is based on 20°CDB (indoor temperature), 7°CDB (outdoor temperature).
 -Pipe Length: 7.5m. Height difference: 0m (Outdoor unit to Indoor unit)

*1: When ASYG18L is connected, connect at least 1 wall mounted type for 9kBTU.

